

The Delta Kappa Gamma Society International



Florida Rays



Vol. 57 No. 2 Mu State Organization of Key Women Educators Winter 2012

Mu State Fall Workshop/ Executive Board September 2011



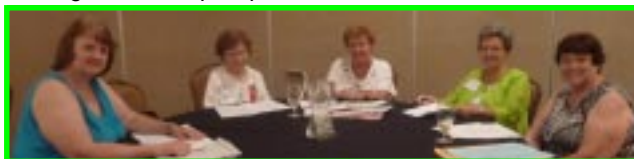
President Carrie Frye conducting the Executive Board meeting.



Michelle Haynes, Carrie Frye and Terry Stanilonis sharing Leadership experiences.



Timekeepers keeping time.



Finance Committee holding meeting.



Workshops are diverse, well attended and enjoyed by all. Above, a *fundraising* workshop full of *fun* ways a chapter can raise money for its projects.

**Don't miss the next
Fall Workshop/ Executive Board meeting.**

Below, workshop treasurer, Carolyn McGowan with Joanne Hogan and Jeanne Jones counting money.



Dr. Beverly Helms nominee for International President

Dr. Beverly Helms has been selected as the nominee for the **2012-2014 International President**. If elected, Helms will be the second member from Florida to serve the Society in this position. In 1950, **Dr. Eunah Temple Holden** was elected as the National President.

Beverly has served as Mu State President, Editor, Photographer, Parliamentarian, and in various other positions. She has been Southeast Regional Director, International Member-At-Large and International Second Vice President. She chaired the International Communications Committee, served as a member of the International Leadership Development Committee and assisted the Administrative Board in the development of a Strategic Action Plan, an Employee Handbook, and in updating the Administrative Policies Governing Headquarters.

Dr. Helms received the 2010 International Achievement Award.



Help us **continue** to save money on printing and mailing the **Florida Rays** by sending Your name, ID # and email address to lindad@dkg.org

There are still **1422** members whose names and email addresses **have not been sent to international**.

All chapter presidents were given a list of chapter members who had not submitted email addresses. Only 80 names and emails were submitted following the fall meeting in September. Would you do this **NOW** for your chapter?



Florida Rays

Mu State Organization
The Delta Kappa Gamma Society International
Volume 57 Number 2
Winter 2012

Florida Rays: (USPS 091-890)
(ISSN: 0896-3711)

Published 4 times each year by Mu State Organization of The Delta Kappa Gamma Society International at 2954 Bonifay Gritney Road, Bonifay, FL 32425.

Periodical postage paid at Tallahassee, Florida and additional post offices.

POSTMASTER/MEMBERS: Send address changes to: The Delta Kappa Gamma Society International, P. O. Box 1589, Austin, Texas 78767-1589.

Editor

Dr. Beverly Helms
P.O. Box 728
Bonifay, FL 32425 - 0728
Telephone: 850-547-3220
E-mail: bevhelms@embarqmail.com

MU STATE OFFICERS 2011-201

President

Carrie Frye
212 Hammock Oak Circle
Debary, FL 32713
386.668.4409 - cfrye@att.net

First Vice President

Merle Jones
1973 Cane Mill Road
Chipley, FL 32428
850.638.1280 - dwrmsj@att.net

Second Vice President

Gerry Hacker
1216 Cordoba Court
Dunedin, FL 34698
727.742.0325 - pianosteel@hotmail.com

Recording Secretary

Dr. Peg Dunn-Snow
3312 SW 51st Street
Ft. Lauderdale, FL 33312
305.542.4033 -
pegdunnsnow@bellsouth.net

Corresponding Secretary

Dr. Nancy Henning
2903 Cross Creek Circle
Tallahassee, FL 32301
850.878.7479 - the_hennings@yahoo.com

Immediate Past Mu State President

Ruth Pridgen
1544 LeBaron Ave.
Jacksonville, FL 32207
904.398.1268 - repridgen@aol.com

Related Personnel

Headquarters Administrative Assistant

Kristen Stenberg
189 Oakleaf Circle
DeLand, FL 32724
386.748.8157 - kstenberg@cfl.rr.com

Executive Secretary

Judith Mix
2267 SW 16th Street
Okeechobee, FL 34974
863.763.2675
mixjutom@embarqmail.com

Treasurer

Myra Ponder
253 Prado Street
Apalachicola, FL 32320
850.653.9457 - mpond@mchsi.com

In Memoriam



We pause and remember these with love and appreciation.

~

Sarah Jane Janey Ball
Delta Alpha

Mary J Jody Morris
Kappa

Nancy B. Poole
Lambda

~

Presidents

Members' names are not listed in **Florida Rays** until Form 6 is received from the chapter.

Please send Form 6 immediately upon the death of a member to:

Fern Cleary
9557 Portside Drive
Seminole, FL
33776

Parliamentarian & Editor

Dr. Beverly Helms
P.O. Box 728
Bonifay, FL 32425-0728
850.547.3220 - bevhelms@embarqmail.com

Mu State Webmaster

Dr. Peg Dunn - Snow
3312 SW 51st. Street
Ft Lauderdale, FL 33312
305.542.4033 - pegdunnsnow@bellsouth.net



Carrie Frye
Mu State President
2011 - 2013

Happy New Year. We, Mu State members, have so much to look forward to in 2012. It will be a very busy, yet most exciting year for us.

As you considered resolutions and goals for 2012, on what did you base your plans? Did you give thought to things you can do differently or, better yet, simply *stop doing*? When discerning the key ingredients that are the catalyst for successful change or transformation, particularly in the business world, research shows that the key is not what to do, but what to *stop doing*. We can apply this to our personal life and especially to growing our Mu State organization chapters.

One of the most precious of all resources is **time**. Are you focusing on using your talents and interests for the important things? In your chapter, are you embracing our goals of growing and promoting your chapter by participating in programs that are examples of educational excellence? Are you supporting early career educators? As your chapter plans for the future, what, if anything, should you consider discontinuing to allow time to be expended on "Embracing Our Vision ~ Designing Our Future?"

The six **District Meetings** start in February and end in May. The directors, with your help, have been

Comments from Carrie

Embracing Our Vision ~ Designing Our Future

Do more than belong: **participate**. Do more than care: **help**.
Do more than be fair: **be kind**. Do more than forgive: **forget**.
Do more than dream: **work**. *William Arthur Ward*

hard at work planning for exciting, entertaining and educational meetings in their respective districts. Your state officers are looking forward to seeing you at your district meeting and providing break-out sessions and training. Each newly elected chapter president will participate in a two-hour training session.

If you read the last "Carrie's Corner" on our newly designed website, you know that once again the Mu State organization has made history. On July 12-15, 2012, our leadership seminar will meet for the first time with its new name: **The Jesslyn McBride Leadership Growth Seminar**. In October 2011, the executive board voted to re-name this seminar for the generous and accomplished Past-Mu State President, Jess McBride, who was responsible for the founding of this opportunity through which participants build leadership skills. She is most deserving of this honor! Jess now lives in North Carolina where the resolution was presented to her by a graduate of the Florida seminar, Pat Taylor. Read the article in this issue by Past-Mu State President, Edie Smith.

EXTRA! EXTRA! Mu State continues to have moments of monumental proportion. During the week of July 25-28, those of us traveling to New York City for the International Convention will witness the election of a new International President. Florida's **Dr. Beverly Helms** has been nominated for this highly esteemed position! I am most confident that with her accomplished background, her dedication to the Society and

her proven leadership skills, Dr. Beverly Helms will be at the "helm". Please plan to join us in New York for this auspicious occasion. Reservations at the Sheraton New York Hotel and Towers opened on December 1, 2011.

At the International Convention the 2012-2014 Southeast Regional Director will also be elected. She will be the one with whom we will work as we host the **July 2013 Southeast Regional Conference** at the **Gaylord Palms Resort and Hotel**. We still have planning to do to spotlight our state on Wednesday night of the conference and we are counting on having Florida members visible. If you have suggestions for musicians, other entertainers, speakers, ideas for Florida favors, etc., please notify me as soon as possible.

On **September 14-15, 2012**, we will be back at the Orlando Airport Marriott for our **Fall Workshop/ Executive Board Meeting**. Every state officer, district director, chapter president, committee chair and past state president is expected to be present. Make plans now to be there.

As you can see, this will be a very busy year. I chose the opening quote as a reminder that it takes work to make our dreams come true. Your involvement is needed! Your contribution, no matter what form or how large or small, which benefits our Society, is deeply appreciated. Let's build a strong foundation on which those who follow can design their future.

Carrie

From the Desk Of...

It may appear to be a slow and quiet time; however, it has been quite busy. The minutes from the Mu State Fall Executive Board meeting were sent to the Executive Board. Members moving to Florida receive information regarding chapters in their new location. Email addresses or phone numbers of members change and need updating.

I have given all chapter presidents lists of the members in the chapter who have not submitted their email address to international. Only 80 names have been submitted since the Fall meeting in September. There are still 1422 members who have not sent an email address. Obviously, some of these do not have email, but I suspect that at least 90 % do. I will be sending a new updated list to the chapter presidents. If you will send the email addresses of your members to me, I will submit them and we will have it finished. All new members are asked for their email addresses when they complete the initiate card.

Stay in Touch. Judith



Judith Mix
Mu State
Executive
Secretary



Ann Perrine
UN Liaison
for Mu State



Ann prepared the poster at left for the Mu State Fall Workshop/ Executive Board meeting in September. She serves as a member of the Mu State **Educational Excellence Committee** and is the contact person in Florida for the Schools For Africa Project as well as **CTAUN**. CTAUN stands for

Committee Teaching About the United Nations. The United Nations first articulated the right to education in 1948. Over the last 63 years, much effort has been directed toward the human right to education. Yet, worldwide, it is estimated that 69 million children are not in school and approximately one adult in six is unable to read or write. Two out of three illiterate adults are women.

The annual conference will be held at the UN Headquarters in New York City on **February 3, 2012**. Check the website, teachun.org for more specific information.

Finance Committee Plans Ahead

The Mu State Finance Committee embraces our vision and designs our future each time a new budget is adopted by the Executive Board. The committee is reviewing the currently adopted budgets for 2011-2012 as well as for 2012-2013. Adjustments may be proposed in the 2012-2013 budget at the Fall Workshop/ Executive Board meeting in September 2012.

At the district meetings you may be asked to help the committee develop a proposed budget for the subsequent biennium. The committee will hold a **Go To Meeting** to review input and prepare recommendations for changes to the budgets.

Contact Dr. Hunt at Margie314159@aol.com



Dr. Margie Raub Hunt,
Chair,
Mu State
Finance
Committee

Mu State Website updated frequently

Dr. Peg Dunn-Snow
Mu State
Webmaster



The Mu State website has a new host company. It is Weebly.

The new website address is www.dkgmustateflorida.weebly.com It is **updated frequently** so be sure to check it out on a regular basis.

Even though the site has a new look, all the services of the old site are there, but with a more convenient way of finding information through a series of tabs on the left side of the homepage.

The new site offers a blog feature that has been activated. The Mu State Blog is dedicated to posting tips, suggestions and encouraging words to our early career educators. Join the discussion and leave your words of wisdom. Mentoring early career educators is both an international initiative and a major goal of the 2011-2013 Mu State biennium.

Members Design their Future

Sallie Shelton Culver, Beta, is definitely a trailblazer. She was recently honored for her life time achievements at the Mary McLeod Bethune Performing Arts Center in Daytona Beach. An endowed scholarship fund in her name will benefit graduate students in the Transformative Leadership Program.

Culver, a 1959 Bethune Cookman graduate vowed someday to give back to the college. She was one of the first members inducted into the Mu State Hall Of Fame. Sallie Shelton Culver raises the bar for all professionals, truly makes DKG proud, and definitely increases the visibility of the organization in the community.



Dr. Rhonda Work of Alpha Kappa received the 2011 Distinguished Alumni Award for the School

of Communication Sciences and Disorders at Florida State University. As an adjunct professor at FSU, Dr. Work introduced undergraduates to the field of speech pathology and audiology. She has served as president of two DKG chapters and currently is the treasurer of Alpha Kappa and the Big Bend Coordinating Council.

Marcia de Meza was the finalist for Polk County 2011-2012 Lake Gibson Teacher of the Year. Marcia is a member of **Lambda**.

Janice Scholz, of Delta Eta, is now the Director of Career and Technical Education in Brevard Public Schools. Promotion of DKG members is inevitable.

Beta Lambda has two Teachers of the Year. **Carrie Wilson** is at Warrington Elementary and **Amy Parker**, a new member, represents Gulf Breeze High School.

Kathy Yarbrough's poster presentation has been accepted for showing at the 23rd Annual National Youth-At-Risk Conference in March. She is a member of **Delta Theta**.

Gamma Kappa chapter is bragging about three of its members and rightly so. **Lisa Burke** and **Janet Whalen** were Lucille Cornet Professional Development recipients, receiving \$1,000 each. **Hilah Mercer** has been nominated for recognition by the Florida Association of School Administrators for her strong, capable leadership.

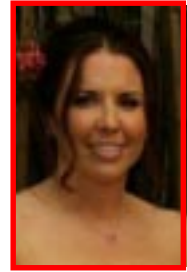
Wendy Drexler is a member of **Alpha Chi**. She earned her PhD from the University of Florida, while serving as the editor of the chapter's newsletter. She is the Director of Online Development for Brown University.

Ethel Winn of **Mu** chapter will be 100 years young in January. Happy Birthday, Ms. Winn and may you have many more. Her resume contains a plethora of honors, awards, recognitions and special achievements. The *Citrus County Chronicle* has published several articles about this outstanding educator. She was a long time Principal and Administrator in Citrus County. Being DKG helps one to live a long and productive life and leave a remarkable legacy.



Mary Cavaoli, Xi received a National Endowment for the Arts grant with the Morikami Museum for an Artist -in Residence from Japan to work with her students in February 2012. She was the Broward Teacher of the Year and Florida Art Teacher of the Year for 2003, and a finalist for National Teachers Halls of Fame in 2009.

Dr. Nicole Crane has been named Florida's 2011 Elementary Art Educator of the Year by the Florida Art



Education Association. Also in the same chapter, **Linda Petuch**,



Science Lab teacher was awarded the 2011 Outstanding Elementary Science Teacher by the Florida Association of Science Teachers

at the annual FAST Conference in October. Linda is president of the Palm Beach County Science Educators' Association. Congratulations to both these **Beta Xi** members.

Beta Mu Goes Wild was the theme of the November chapter meeting. The Research Committee presented a program on the Schools for Africa Project with a power point presentation on the facts about the project and an art class. Members learned to draw an elephant by watching a video by Jan Brett. A raffle of several items with an African theme was held and proceeds will be sent to the Schools for Africa Project. The chapter collected \$200.

Grace Wilhelm was a nominee for Counselor of the Year as a member of the American School Counselors Association. Grace has conducted workshops for Mu State and others and compiled a booklet on **Stress Busting**. Contact her at grayseaw@yahoo.com.



Many DKG members are active and recognized by other professional organizations. Share with **Florida Rays**.

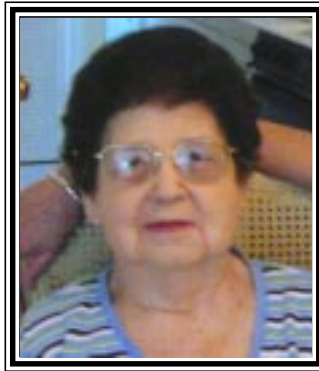
Jesslyn McBride Leadership Growth Seminar

by Edie Smith, Past Mu State President

The Mu State Leadership Growth Seminar is getting a facelift in the form of a name change after a recent vote by the Mu State Executive Board. The seminar is now known as **The Jesslyn McBride Leadership Growth Seminar**.

The seminar was founded and primarily funded in 1984 by then Mu State President, Jesslyn McBride, who felt that leadership skills for women are essential in today's world and need to be encouraged and developed. Since 1984, over 750 Delta Kappa Gamma women in Florida, North Carolina and Sweden have graduated from the four day seminar and continue to serve both the Society and the Education community. Jess is also the catalyst in helping other states in the International Society start their own Leadership Seminars.

Jess McBride has been referred to by Society members as a visionary, leader, mentor, sister and friend to thousands of women in The Delta Kappa Gamma Society



Jesslyn McBride

International on the chapter, district, state, regional and international levels. Her Mu State resume includes serving as Kappa chapter president, district III director, Mu State President, and presenter at regional and international conferences. Jess became a member of the Society in 1964 and has shared her wisdom and vision with the women of Mu State for almost 50 years. Even today she continues to encourage women educators to pursue Society and Educational leadership positions.

Jess left Florida in 1990 to be with family in Rocky Mt., North

Carolina. Once there she served and continues to serve selflessly as an inspiration and encourager in Mu Chapter, North Carolina as newsletter editor and publisher, treasurer, yearbook creator and scrapbook keeper. She also served as the 2003 SE Regional Registrar. Jesslyn McBride not only talks the talk, she walks the walk!

Irma Norman, who has worked on the Mu State Leadership Growth Seminar committee since its inception, commented, "It's about time the seminar was named after Jess! There would not be a Leadership Seminar without Jesslyn McBride."

**From: Jesslyn McBride
To: Members of Mu State**

There are no words to describe the tremendous feeling of pride and pleasure that I received upon becoming aware of your resolution of October 3, 2011. I am most grateful to each of you and to each person who had a part in it.

It is certainly an honor that I never expected and would never have thought of and I wish that the name of each of those who helped me could be on it also. Let us not forget the tremendous contributions of Patricia Parham and others who gave of their time and talents to work with me.

Certainly that first class and committee in 1984 deserve mention because they took the chance by attending something they knew so little about and giving it their best.

It was a glorious time when we realized we had created something good. May that wonderful feeling extend on and on into time.

Thank you for the wonderful recognition and for giving me the opportunity and support to make this dream a reality!

Attended the Seminar?



**Pat Litterick,
2011
Participant
and
Leadership
Development
Committee
Member**

One of Mu State's most rewarding programs is the Jesslyn McBride Leadership Growth Seminar. I had the opportunity to attend in June, 2011. It was amazing to be with a group of educators, ranging from their twenties to seventies, for four days. The leaders of the training are dedicated educators from all areas

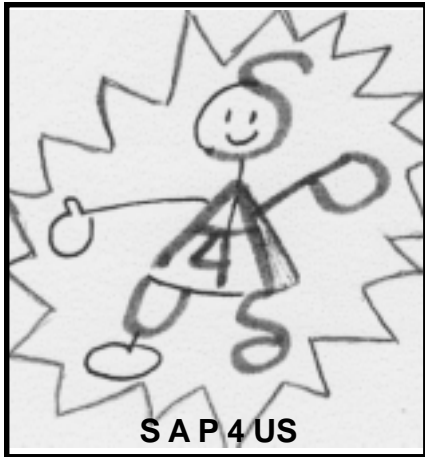
of education. They presented their expertise in leadership by sharing research and personal experiences. We learned in whole group, small groups, and even while eating our meals. Workshops from good fashion, bad fashion, and etiquette to identifying our personality types were presented.

The next Leadership Growth Seminar will be **July 12-15, 2012**, at the Tampa Airport Marriott. Applications are on the Mu State website and must be submitted by **January 16, 2012**. I know educators are already leaders in so many ways, but this seminar is the icing on the cake.

Strategic Action Planning

Planning is bringing the future into the present so that you can do something about it.

Alan Lakein



Barbara Van Diepen conducts a workshop on Strategic Planning at the Mu State Fall Workshop. All chapters were encouraged to use the process of strategic planning as a vehicle for designing their future.

How To Begin?

- A.** Review the Mission and Vision Statements as well as the Seven Purposes.
- B.** Use the SWOT Procedure. Consider your Strengths. identify your Weaknesses. Determine your Opportunities. List the Threats (obstacles.)
- C.** Determine the vision for your chapter.
- D.** Select Areas on which your chapter needs to focus. Then decide in relation to those areas, (1) where you are now, (2) where you want to be as a chapter, and (3) How can you get there?

Writing the Plan

- A.** Decide the Areas Of Focus
- B.** Write one or more Goals/ Objectives for each Area of Focus. Objectives need to be SMART - Specific, Measurable, Achievable, Realistic and Time based.
- C.** Write one or more Action Steps (Activities.) Remember to include (1) Action, (2) Group or individual responsible, (3) Measurement to determine accomplishment and (4) Timeline for completion.

Q and A

- Q.** Is there a certain number of areas we need to address?
A. It depends on the needs of your chapter.
- Q.** Is there a special format?
A. Not really. Whatever works for the chapter. Chapters with Plans will share upon request.

A good plan today is better than a perfect plan tomorrow.

George Patton



From left to right, **Carrie Frye, Judith Mix, Gerry Hacker, Dr. Nancy Henning, Merle Jones, Sandy Smith and Dr. Peg Dunn-Snow** visited the Orlando Marriott at Lake Mary. This

is the site that has been approved by the Mu State Executive Board for the Fall Workshop/Executive Board on September 20-21, 2013. Mu State will be the only conference on site. Room rates will be less than members now pay at the Airport Marriott. Parking will be free and a variety of restaurants are nearby. The **Lake Mary Marriott** also agreed to provide complimentary rooms for the 2013 summer planning session for the officers for the 2013-15 biennium as well as other amenities.

Join the Mu State Chorus



Ruth Yeilding and Lonnie Kirsch invite you to be a part of the Mu State Convention Chorus in 2013. Let Lonnie know if you are interested, your phone number, email address, and the part you sing. Contact her at lonchobee@netzero.com



Chapter Biennial Reports

Chapters, be prepared to share the following type information when you submit your report.

1. Did you support the Schools For Africa Project?
2. Did you support early-career educators?
3. Did you attend training provided by the Mu State Educational Excellence Committee?
4. How many programs/projects/activities did you have that focused on the following:
 - . Increasing members' personal and professional pride
 - . Excellence in Education
 - . Increasing members' global awareness
 - . Understanding the DKG/UN relationship
 - . Impacting educational law and/or policy.
5. What chapter activity had the greatest impact on education?
6. Describe your most successful chapter program.
7. What resources do you use for chapter program ideas?
8. What suggestions have you received from the Mu State Educational Excellence Committee to assist you?

DKG Chapters with Heart



Delta Alpha Chapter supports Clothes to Kids. New underwear and socks of all sizes for students in grades K-12 are collected. **Sara Wartenberg** is the President.

Beta Chapter selects a family for Christmas and shares the Holiday Spirit with them.

Gamma Mu collects items for its Cornerstone project including diapers, nursing pads, baby toiletry items and regular formula.

Alpha Xi has a telephone tree to keep in touch with its members and contributes pencils, paper and pencil sharpeners to their project, Mercy Uganda.

Mu Chapter collects items for its CASA library.

Delta Beta collects school supplies and personal hygiene supplies for its Hearth Project which distributes the material to homeless students in Polk County.

Alpha Omicron members bring children's books for the Milton Memorial Birthing Center.

Alpha Chi's President, **Robin Elliott**, reported that the chapter completed 20 quilts to give to the Salvation Army for the homeless.

Alpha Kappa stuffed and delivered 81 tote bags that were sewn by the Tallahassee Crochet Guild. Bags were given to special education teachers in Leon County.

Supporting Early Career Educators

Many chapters are providing support for early career educators, an international as well as state organization initiative. However, at the beginning of the year, **Beta Epsilon** gave 36 gift cards of \$50 each to first year teachers. Surely the teachers appreciated the support and have a warm place in their hearts for DKG. Be sure to keep up with your hours of support for other educators. You will be asked to report them at some point. The form is available on the international website at www.dkg.org

Mu Chapter prepares New Teacher Survivor Kits to help beginning teachers.

Kathie Hammer of Beta chapter led a strategic planning session on getting younger members. **Kathie, Tanna Gartside** and President, **Sue Hofstrand**, developed a rubric for a dynamic year for current and future Beta Chapter members.

If your chapter is developing or has completed its Strategic Action Plan, please let Barbara Van Diepen know. vandiepen61@bellsouth.net

Contemporary Ceremony of Initiation

A new download from the international website, www.dkg.org is the "**Contemporary Ceremony of Initiation**". The traditional initiation ceremony has emphasized the Founders, symbols, key pin and other protocols that bind DKG members together. The new ceremony focuses more on bringing together qualified and diverse women educators, the needs of educators serving in a broad spectrum of

educational fields and emphasizing worthwhile projects that make a difference in communities around the world. You may use whichever ceremony suits you best. You might even want to develop your own hybrid ceremony, combining parts of both of them. The choice is yours.

Go to the international website, click on "Committees", then on "Membership". Look on the right "Resources" sidebar and you will

see these items listed.

Please share your membership success stories with **Carol Ann Casey**, Mu State Membership Chair at caseyca@bellsouth.net



**Carol Ann Casey, Chair
Mu State
Membership**



Dr. Elsie Gross, Trustee
Educational Foundation



Janet Whalen and **Lisa Burke**, each received Cornet Professional Development Awards in the amount of \$1,000. They will use their awards to attend the Ron Clark Academy in Atlanta, Georgia. They are members of **Gamma Kappa** chapter.

Jan Graham, of Iota Chapter, received a \$1,000 Lucile Cornet Professional Development Award. She will attend the National Council of Teachers of English/ Assembly on Literature for Adolescents.



Ann Blsfield

Wow, I thought as I listened to the description of the woman who was to receive the Sara B. Ferguson Achievement Award. She and I have some things in common. Then I realized the description was of me. How could that possibly be?

I certainly am not worthy of this award. I am a quiet person who likes to act behind the scenes. I have never been Mu State President or even a District Director. Who would even consider me for such an honor?

It was truly one of the most moving experiences of my life. Over the years Delta Kappa Gamma has meant so much to me



WORLD FELLOWSHIP The Ripple Effect - "Celebrate 65"!

Deborah Thomas, Chair, Mu State
World Fellowship Committee

It's because of you, the members of Delta Kappa Gamma, that women of non-member countries have the opportunity to live and do graduate study in the United States and Canada. The vision our founders had in 1929 for an organization of women educators uniting to help empower women to be future leaders in education began 65 years ago.

World Fellowship is about much more than members and state organizations contributing to the Fund, although this is an important aspect. It's about a worldwide networking of women helping women through knowledge and professional development to reach their full potential. Go to www.dkg.org to learn about our World Fellowship recipients. Get in touch with them. Let them know that you care about their well being. A chapter in North Carolina used Skype to communicate with a recipient during a chapter meeting.

Since this Fund is maintained solely through volunteer contributions, the World Fellowship Committee is asking each MU State member to "**Celebrate 65**" by contributing *65 cents* to World Fellowship at *each* chapter meeting; for each chapter to contribute *65 dollars* to the Fund; and each member attending your District Meeting to contribute *65 cents*. Contributions to the World Fellowship Fund may be made using Form 43.

We are helping make a global impact on women and their lives and in their countries. Empowering one to empower many . . . what a ripple effect we have!

Achievement Award Recipient Shares Nominations Sought

by Ann Blsfield, Recipient

and allowed me so many experiences I would otherwise have never had. Most importantly, I have made so many wonderful friends I would never have known without my participation in the Society. In addition, I have visited so many places I would otherwise have never seen. Since it is the chapter which must submit the nomination for the award, I most especially felt touched that my chapter – Beta Theta- would consider me as a possible recipient; and even keep it a complete secret from me.

I know so many truly exceptional women in Mu State who have not yet been recipients of this

highest award our organization presents to its members. Two awards are presented at the Mu State convention – one for each year of the biennium.

If you know of a person in your chapter you feel merits the Sara B. Ferguson Award I urge you to work with other chapter members to nominate her. I can assure you that it will have a great impact on her life, as it has on mine.

If you have a question or want to send your chapter's nomination, contact **Dr. Ann Lumsden**, Chair, MU State Awards Committee. You may contact her at lumsden@bio.fsu.edu.

Attend Your District Meeting!

More specific information and registration forms are available on the Mu State Website.

District III

Passion is the Trigger to Success

Marchman Technical
Education Center
New Port Richey
February 11, 2012



Pat Hazellief,
District III Director,
invites you to attend
their meeting. Break-
fast and lunch will be
provided by the

Culinary Arts class. The new district director and the member of the nominations committee will be elected. There will be fun, informative and interesting workshops. Chapter officers will have special training sessions.

District II

Riverside Presbyterian
Church
Jacksonville

March 3, 2012

**Susan
Hofrichter**
District II
Director



Susan Hofrichter is an experienced district director and will provide exciting workshops, a yoga class, training for chapter officers, teacher tips, entertainment and a great lunch. The Friday night group will have dinner at River City Brewing Company. Registration on Saturday will begin at 8:00. All chapters from District II are invited and encouraged to have all officers in attendance for training. Incoming chapter presidents will be trained at each district meeting by Mu State President, Carrie Frye.

District VI

*Lassoing the Essence of
Delta Kappa Gamma*
First Presbyterian Church
Arcadia

March 10, 2012

Come dressed to win the best western costume contest. Registration is at 8:00 and continental breakfast with juice, coffee and doughnuts will be provided. In addition to the special workshops, general session, entertainment, silent basket auction and chapter displays, a BBQ lunch will be enjoyed by all.

Sheila Knoche
District VI Director



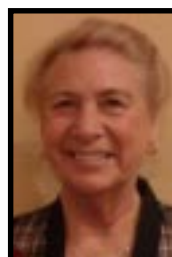
District IV

Dixon Hendry Campus
Indian River State College
Okeechobee

March 24, 2012

On Friday night the early arrivals will go to Lightsey's to enjoy catfish, frog legs, gator bites, cooter, etc. District Director, Lonnie Kirsch has planned a full day on Saturday which will include workshops, a general session, entertainment, silent auction baskets, lunch and much more. Leave the city and join with district IV members in real cowboy country.

Lonnie Kirsch
District IV Director



District V

From Vision To Action
Safe Schools Institute
Boca Raton
April 28, 2012



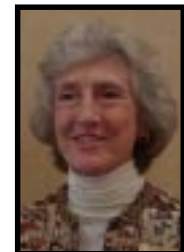
Elizabeth Decker
District V Director

Experience *Pride in the Big Picture* on the regional level as District V honors its' outgoing and incoming presidents and welcomes Mu State officers, past presidents and committee chairs. Registration is at 8:15, and sessions will start at 9:00. In addition to the business agenda and workshops lunch will include entertainment by Dimensional Harmony—the Boynton Beach High School chorus, winners of the Today Show's Show Choir Showdown in November 2010.

District I

Making Connections
Wright Place -Pensacola
May 5, 2012

Clancy O'Donnell
District I Director



Friday night guests to District I will have a UFO trolley ride and boxed supper. Beverly Stagg will be responsible for registration on Saturday at 8:00. Making Connections sessions will begin at 9:15. Elections will be held, officers trained and all will enjoy a fabulous lunch.

Merle Jones
Mu State
First Vice President



A Workshop for Fall 2012?

You can contribute to the enhancement and growth of Mu State, Delta Kappa Gamma, by presenting your ideas and sharing your expertise at the 2012 Fall Workshop/Executive Board meeting. You can submit your name or recommend someone. We are counting on you to *Embrace Our Vision ~ Design Our Future*.

Please complete the form that is posted on the Mu State Website no later than **July 1, 2012**.

Presenters and topics will be selected in late spring so that the tentative workshops can be shared with the members in the 2012 Summer issue of *Florida Rays*.

You may email the form to Merle at dwmsj@att.net, call her (850 638-1280) or send the form to 1973 Cane Mill Road, Chipley, FL 32428.

Educational Excellence How Are You Doing?

The Educational Excellence Committee promotes International Projects, supports early career educators, and encourages programs and activities that further educational excellence worldwide.

The goals of the committee are to:

- Promote the Schools for Africa Project
- Support Early-Career Educators
- Encourage programs and activities that
 - Increase members' personal and professional pride
 - Focus on educational excellence
 - Promote the DKG/UN relationship
 - Increase member's global awareness
 - Impact educational law and policy
 - Promote the Emergency Fund
 - Encourage programs with music
 - Encourage research.



Sandra Smith
EE Chair
sjsmith@gt.com.net

How are you doing with the Schools for Africa Project? Contact **Ann Perrine** at perrineap@cfl.rr.com. How are you doing supporting Early-Career Educators? Contact **Sandy Byars** at sbbyars@hotmail.com.

For more information you may go to the international DKG website at www.dkg.org or to the new Mu State Website at dkgmustateflorida.weebly.com. You also can find program ideas about personal and professional pride, global awareness, educational law and policy, and educational excellence. A lot of the work has been done to make it easier for you to use.

Donations made to the Emergency Fund are now tax deductible. Be sure to send all donations to **Myra Ponder**, Mu State Treasurer, 253 Prado, Apalachicola, FL 32320. What a great Christmas gift to give in honor of someone special!

Be sure to attend your district meeting and come to the Educational Excellence workshop. There will be a sharing and Q and A time.

Pride in the Big Picture

Remember your first day as a professional educator? Do you recall the excitement and apprehension you felt upon entering your classroom or office? Your thoughts were swimming with your "vision" of turning your classroom or office into an outstanding learning environment! The feeling of being overwhelmed surrounded you. Was there someone there ready to roll up her sleeves and assist and support you or did you go it alone?



Carol Ann Casey, Chair, **Membership Committee**, with members, **Sula Tucker** and **Jan Lorton** giving the committee's challenge at the Fall Workshop/Executive Board meeting.

DKG is encouraging all members to support and assist those "Early – Career Educators" who are in our various local educational settings. This is also a way to meet and invite

prospective members who have the *potential for distinctive service to education*, to build lasting DKG membership.

We must engage ourselves in the challenge of determining ways to support and attract early-career educators as a way to accomplish our goal of "early-career educators" becoming members who will further enhance our *Pride in the Big Picture*.

New powerpoint presentations and scripts for **orientation** and **reorientation** are ready for you to download or order from the international website at www.dkg.org.

The Delta Kappa Gamma Society International
Mu State Organization

Florida Rays

Dr. Beverly Helms, Editor
bevhelms@embarqmail.com

Florida Rays Deadlines

Members are encouraged to call or send information to be used in the **Florida Rays**.

Deadlines are

December 1....Winter
February 1.....Spring
May 1.....Summer
September 1.....Fall

National Legislative Seminar

The National Legislative Seminar sponsored by the U S Forum of The Delta Kappa Gamma Society International, will be held on March 18-21, 2012. For more information, visit the DKG website or contact Carrie Frye, Mu State President or Grace Wilhelm, U.S. Forum contact on the Mu State Educational Excellence Committee.

Mu State Website

Find the Mu State website on the International website. Go to www.dkg.org, click on **Society Websites**, click on the U.S. Flag, then click on Florida. Click at the top of the map of Florida for the state website, and on the chapter name for a chapter website. You can also visit the **new**, frequently updated website at www.dkgmustateflorida.weebly.com

Mu State Headquarters

245 North Clara Avenue, DeLand, FL 32720
Kris Sternberg, Headquarters Administrative Assistant
kris.sternberg@news-jrnl.com or kssternberg@cfl.rr.com
Phone: 386-748-8157

Chapter - Alert Mu State Communications Award

Start now so that your chapter will be recognized by the Mu State Communications Committee at the 2013 Mu State Convention. There are different levels of recognition depending on the number of points accumulated. You do not have to achieve all criteria to be recognized. Earn the maximum number of points possible, then submit your file or documentation of communication efforts by **April 1, 2013**.

1. Chapter has a website and is linked to International. (25 points)
2. Chapter has a social media page with members participating. (10 points)
3. Chapter communicates with members at least 5 times annually. (15 points)
4. Chapter maintains communications with members without computers, emails, etc. (10 points)
5. Chapter information board displayed at district meeting or in community. (10 points)
6. Chapter submits article to **Florida Rays**. (5 points)
7. Chapter submits news releases to local media. (10+ points)
8. Chapter represented at Fall Workshop/ district meeting/ and meets deadline for submission. (10 points)

Important Dates to Remember

Jesslyn McBride
Leadership Growth Seminar
Tampa Airport Marriott
July 12-15, 2012

Applications on Mu State Website
Deadline - January 16, 2012

International Convention
Sheraton New York
Hotel and Towers
July 24-28, 2012
(First General Session and New York
Night is on Tuesday, July 24th.)

Hotel reservations can be made at any time. Go to international website or directly to <http://www.starwoodmeeting.com/Book/DeltaKappaGamma>

Mu State Fall Workshop
Executive Board meeting
Orlando Airport Marriott
September 14-15, 2012

Workshop presenters submit proposals by **July 1, 2012**.